

Guide to upgrading the LS1i USB Interface Firmware.

IMPORTANT NOTICE:

Please power off and disconnect your LS1 and LS1r Hifi Remote from the LS1i USB interface.
ONLY the LS1i USB Interface should be connected to the PC while upgrading the firmware.
Do NOT disconnect the USB cable during the update procedure!

This upgrade procedure requires a Windows PC (XP, 7, 8, 10 or 11) with the LS1 PC Remote installed. You can find the LS1 PC Remote here: <http://www.grimmaudio.com/info/downloads/>
Please make sure you are using the latest version. This version includes the firmware.
The firmware is automatically installed in this folder, (unless you have chosen otherwise).
C:\Program Files\Grimm Audio\LS1-Remote\LS1i_Firmware\LS1i_DSD_V0105.bin
If possible delete version LS1i_DSD_V0104.bin and LS1i_DSD_V0_0.bin.

How to check the firmware version on Windows:

Open the Grimm Audio Control Panel.
Search for: "Grimm Audio Control Panel".
In the "Device 0" tab, the version is indicated at "RevisionID:".
If the firmware is 0x0105 your LS1i USB interface is up to date.
Otherwise follow the procedure as outlined below.

How to check the firmware version on Mac:

Open "System information.app" via spotlight.
Look for: Hardware -> USB
Here the USB Interface is listed as "Grimm Audio LS1 USB Interface".
Select the USB Interface.
At "version:" you will find the version of the firmware.
If the firmware is 1.05 your LS1i USB interface is up to date.
Otherwise follow the procedure as outlined below.

Install the firmware (on a windows computer)

1. Open the Grimm Audio Control Panel application.

This can be found under:

Start Menu -> Programs- > Grimm Audio ->
USB interface -> Grimm Audio Control Panel
Or search for: "Grimm Audio Control Panel".

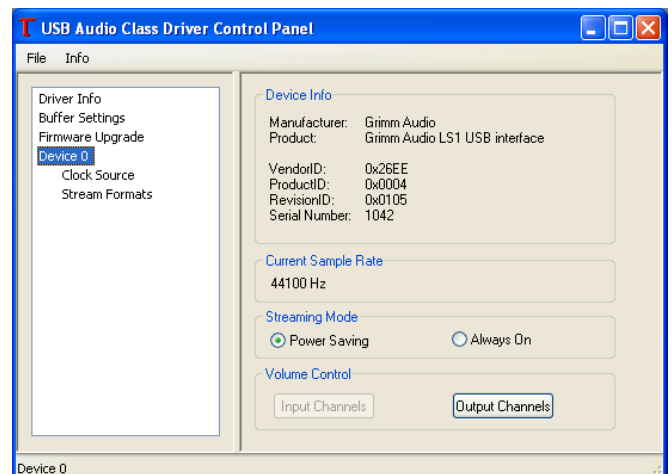
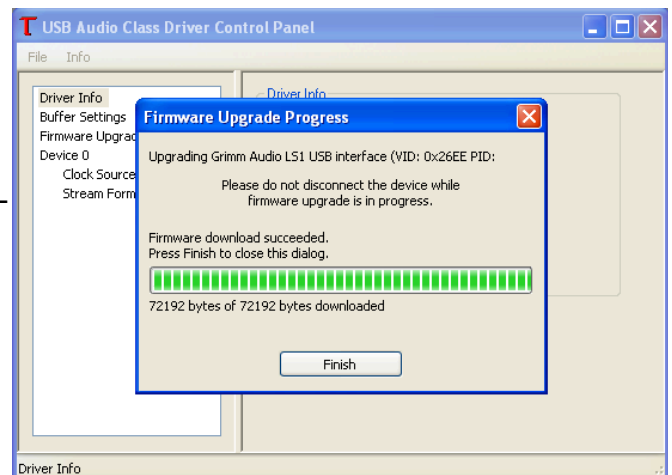
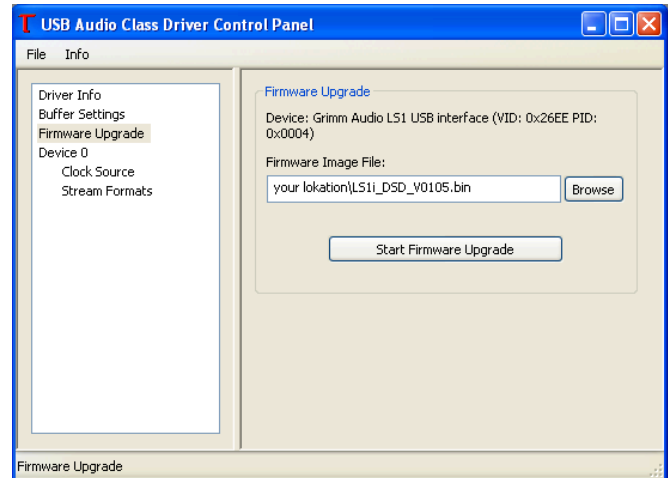
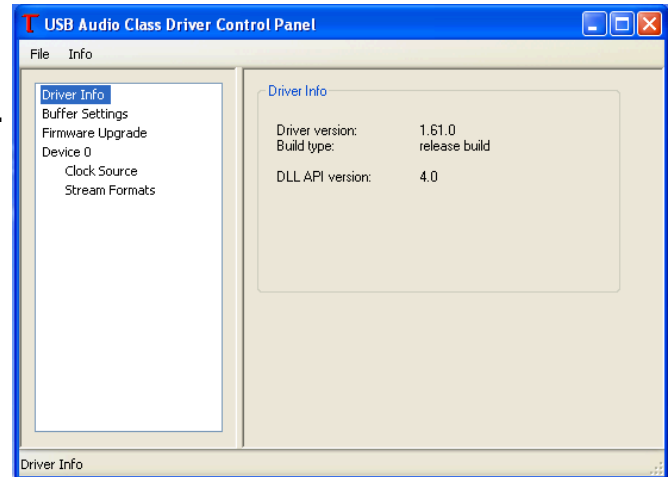
2. Click on "Firmware Upgrade" in the left column.
With the Browse button on the right side choose
the binary file called: LS1i_DSD_V1_0_5.bin

3. Press the "Start Firmware Upgrade" button and
wait for the "Firmware download succeeded"
prompt to appear. Do not disconnect the LS1i USB
Interface before the upgrade is finished!

4. Press "Finish" to finish the firmware upgrade pro-
cedure.

5. Click "Device 0" in the left column, the firmware
version should now read "RevisionID: 0x0105".

Congratulations, you have successfully upgraded
your LS1i USB Interface.



Note:

Use the "transparency check" or "feature check" LED to make sure that you actually are playing back your DSD files unaltered by your playback software. If you playback a DSD file and the LED stays off, chances are your software playback application (e.g. Foobar, Audirvana Plus etc.) might internally convert the DSD file to PCM. Please check the settings/preferences of your playback software.

Change log:

V1.05

- Solved recognition problems on startup.
- Improved overall stability.

V1.04

- Support for PCM up to 24/384kHz ("DXD"), and DSD 64/128fs (DoP) audio playback.
- The "transparency check" or "feature check" LED lights up when native DSD or DXD is played back via USB.

V1.00

- Initial release.