

Grimm | *AUDIO*

MU2 Quick Start



Before you start

The MU2 main user interface is the Roon Remote App as the MU2 is a Roon Server and Roon Endpoint in one. The Roon Remote App is available for macOS, Windows, Android and iOS. Please download the Roon Remote app for your device before you proceed. Furthermore, you will need a subscription to the Roonlabs service. Please check out roonlabs.com for more information and pricing.

Connecting and powering up

For a working system, you need at least a power connection, a wired internet network and an amplifier / speaker set-up or a headphone. The image below shows the connections on the back of the MU2. A detailed description of all connectors can be found in the MU2 Hardware Manual.



The MU2 is shipped with a proper mains power cable, use this to connect the MU2 to a mains outlet¹. The MU2 works with nominal mains voltages from 100V to 240V.

Next, connect the MU2 to your local network using a CAT5e or higher category cable via the *Ethernet* port of the MU2. The MU2 automatically obtains an IP address from the DHCP server of your router when switched on.

Then connect your amplifier or active speakers to the MU2, using either the XLR output or the RCA output. Please ensure the amplifier is switched off before connecting the audio cables to the MU2.

When these 3 connections are made you can turn on the MU2 by pressing the small white *Power* button on the back. During the boot process, the display will scroll white blocks until ready. The 'i' in the Grimm logo will light up continuously in the on state.

¹ It is advised using the same wall outlet via a power distributor for the MU2 and connected audio equipment

First time setup

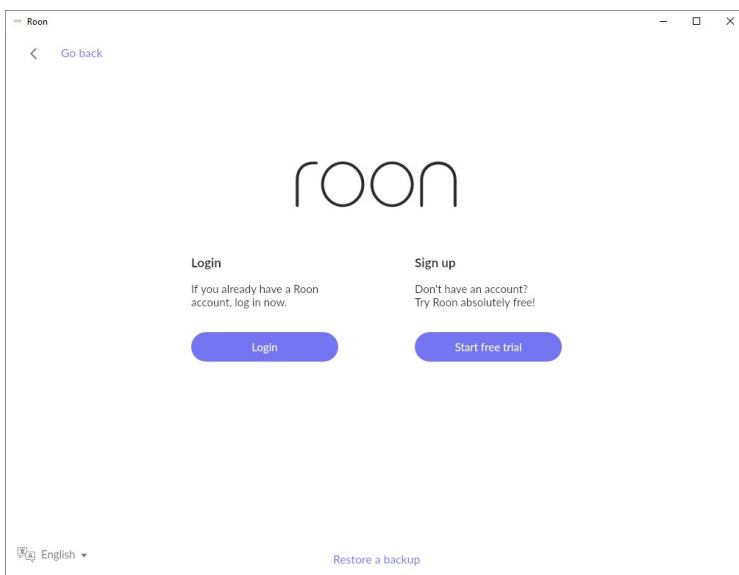
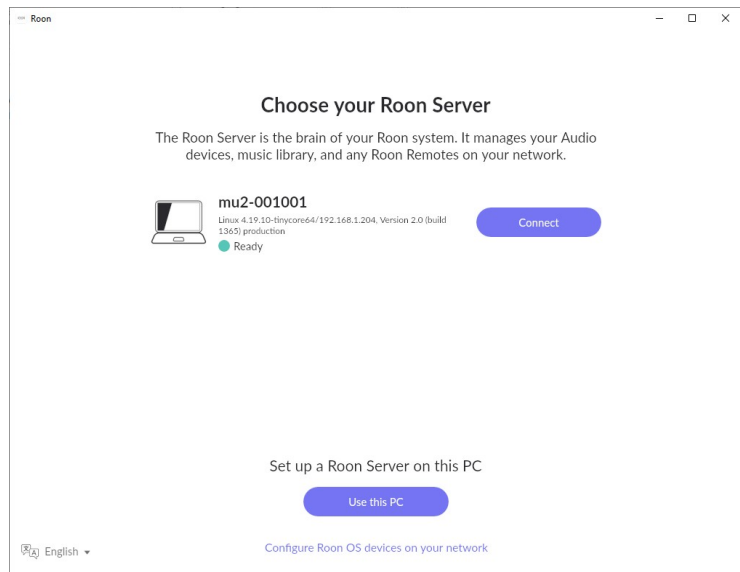
When you turn on the MU2 for the first time, or when you performed a Roon database reset, Roon needs to be set up for its first time use.

Select your Server and log in

Open the Roon Remote app on the device where Roon was installed and it should now show the MU2 as a Roon Server.

The Roon Server in the MU2 is shown with the last part of your unit's serial number. If the MU2 does not show up, check if your Remote is connected to the same network as the MU2 and check if the MU2 has an IP address. Please consult the MU2 software manual for more detailed information how to do this.

Press the Connect button to continue.



In the next screen you must log in using your Roonlabs credentials. The login button will bring you to the Roon webpage where you can log in.

If you have problems logging in or other problems directly related to Roon, please check out the [Roonlabs help page](#) or ask for help on the [Roon support forums](#).

For support from Grimm Audio, please contact us using the [support form](#) on our website.

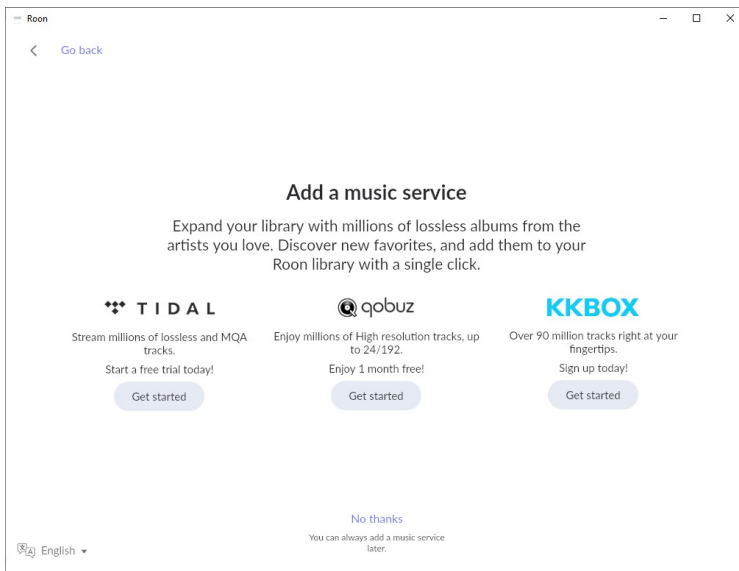
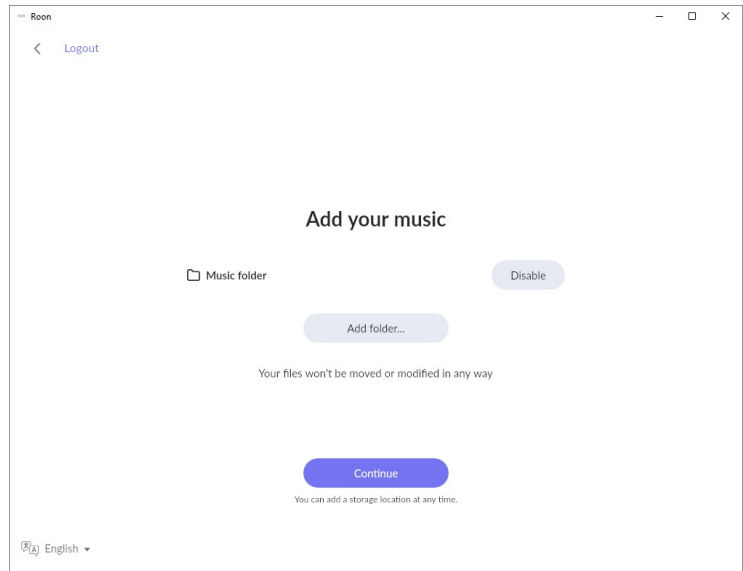
Add music

After logging in you will see the 'Add your Music' page. Here you can add your local music files to Roon.

If you bought an MU2 with internal storage this will show the Music folder, this is automatically added to Roon.

You can add a USB drive or network drive such as a NAS to the MU2 by clicking *Add folder*. More information about how to do this can be found [here](#) on the Roonlabs website.

Click Continue when you are done with setting up your local music or when you don't want to make use of local storage.



The next page allows you to connect your Tidal, Qobuz or KKBOX streaming services to Roon. These are separate subscriptions. One of the great things of Roon is that music from these services integrates seamlessly with your local music.

If you do not want to make use of these streaming services or prefer to add them later, click the *No thanks* button.

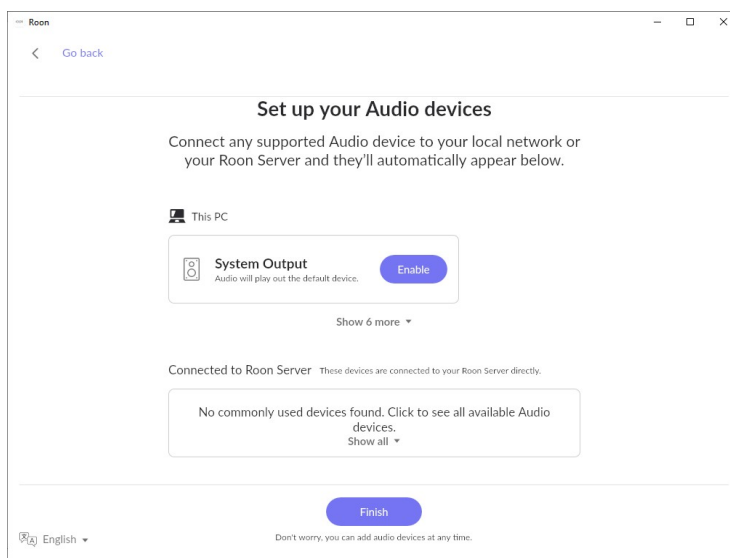
Next, you will enter the Audio settings page of Roon.

Note: The next steps were preset for you in the factory, including activation of the extension. However in some cases, for instance after you have reset your Roon database, you need to follow these steps:

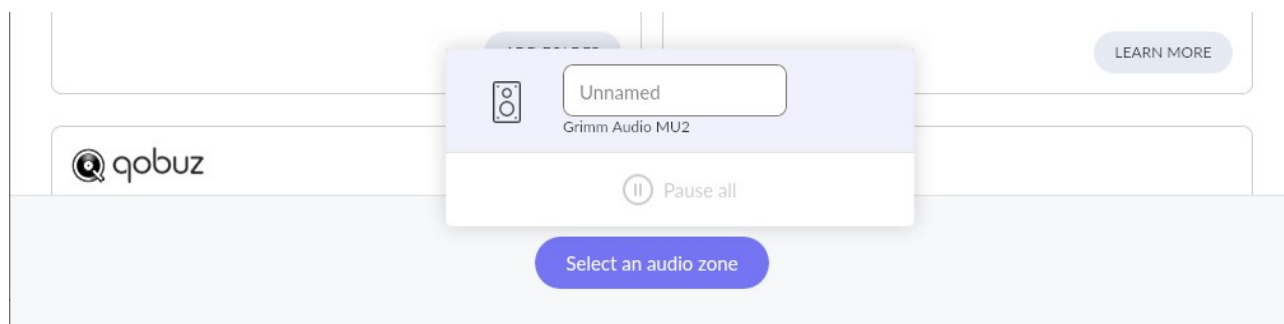
Enable the audio device

Here you should set the MU2 as audio device. Since the MU2 is both Roon Server and Roon Endpoint, the audio device is connected directly to the Roon Server.

To enable the MU2 Endpoint, you must check the *Connected to Server* category. Press the *Show All* button to make the audio device visible. There is only one device here, which has the label *Grimm Audio MU2*. Enable this device and continue by pressing the *Finish* button.



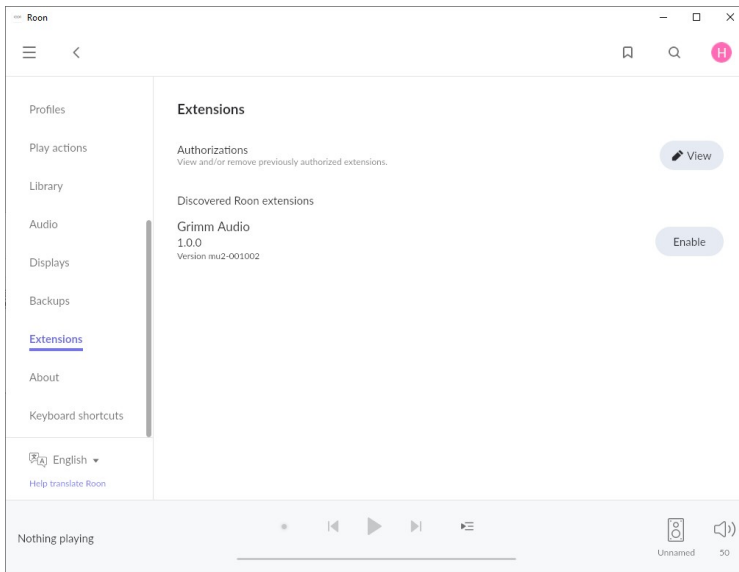
You will now enter the main page of Roon. Press the *Select an audio zone* button and choose the Grimm Audio MU2.



After this there is only one step left, which is activating of the Roon extension.

Activating the Roon extension

Go to the Roon Settings menu to activate the Grimm Audio Extension (in case it was not yet activated for you in the factory). This extension enables track information on the MU2 display and offers access to Roon control via the main knob of the MU2. If you have more Roon Servers in your network, please make sure to activate this extension on the MU2 Roon Server.



To activate the extension, go to the submenu *Extensions* and press *Enable*.

You may press *View* to see the active extensions. Make sure there is only one activated Grimm Audio Extension.

After this step your MU2 is ready for use.

GRUI web interface

The MU2 has a web interface (the “GRUI”) to control the MU2 specific settings. You can connect to the web page through the internet browser using any computer, tablet or smartphone provided it is connected to the same network as the MU2.

The easiest way to enter the GRUI with your tablet or smart phone is by scanning the QR code on the display of the MU2, in menu [4/7]. To enter the menu, press-hold the main knob until the first menu appears. Release the button and turn it right until the fourth menu page is visible. Scan the QR code with your device. To exit the menu, press-hold the main knob again.



Alternatively, you can enter the url link for the control website shown at the bottom of the QR page into your browser. If your router and remote device support this, access to the GRUI is also possible by using the hostname instead of the IP address. The hostname can be found at the bottom of menu [2/7]. It consists of a part of the serial number of your unit. Some browsers require you to add the prefix “http://” to the hostname, as in “http://mu2-00xxxxx”.

Please read the MU2 software manual for more information about the functionality of the GRUI web interface. You can find the latest version of this manual under the downloads tab of the MU2 page on our [website](#).

Stand-by

To put your MU2 in stand-by, press-hold the main knob until the first menu appears. A short press on the main knob will now bring it into stand-by mode. The LED on the 'i' in the Grimm logo will blink to indicate the MU2 is in standby state.

To wake up the MU2 again, just turn or press the main knob.

Hint: It is possible to wake up the MU2 via an IR remote, check the MU2 software manual for details.

Updates

The software of the MU2 may be updated over time. Updates can offer improvements, new features or bug fixes.

When there is an update available it is notified through our newsletter. You can sign up for the newsletter via the footer of every page on our [website](#). An update notification will also appear on the main menu of the MU2 display and in the GRUI. Please keep your MU2 updated to the latest version.

Updates are installed via the settings menu of the MU2. To enter the menu, press-hold the main knob until the first menu appears. Release the button and turn it right until you entered the update menu [6/7]. If you see that an update is available you can start the update process by pressing the main button twice, once to start and once to confirm. Please note that the screen may freeze and even turn completely white for a prolonged time during an update. Depending on the update this may take up to 15 minutes.

Never unplug the unit from the mains while it is updating.

If anything seems to have gone wrong during the update, please contact Grimm Audio support through the [support form](#).